



MONTHLY MEMBERSHIP PROGRESS REPORT

District 321C2

Results as of: 03/31/2019

GMT: ANIL TULSYAN

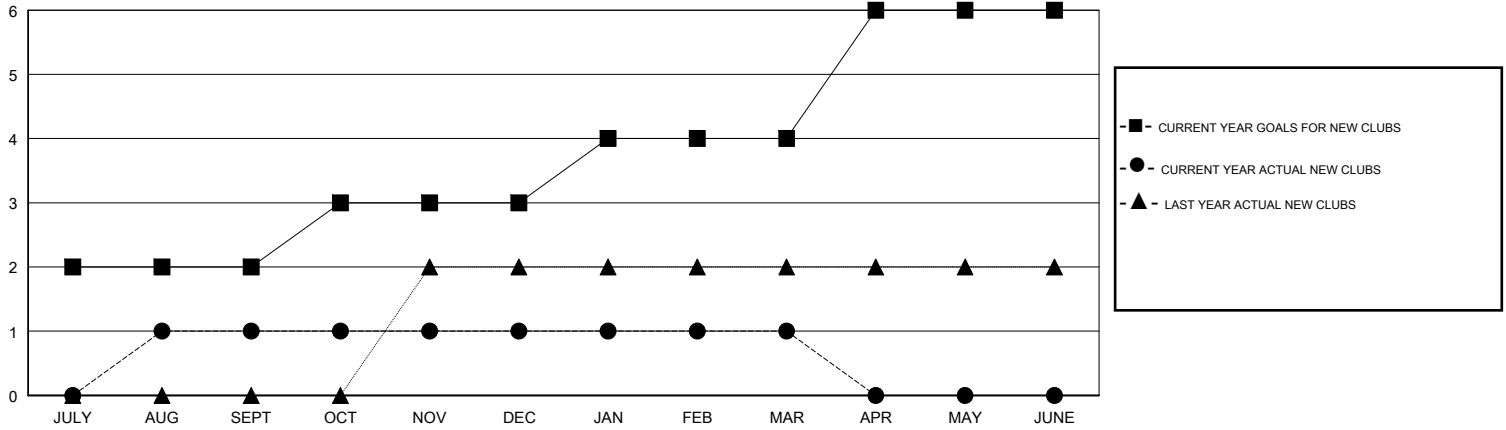
LOCATION INDIA

GMT CA

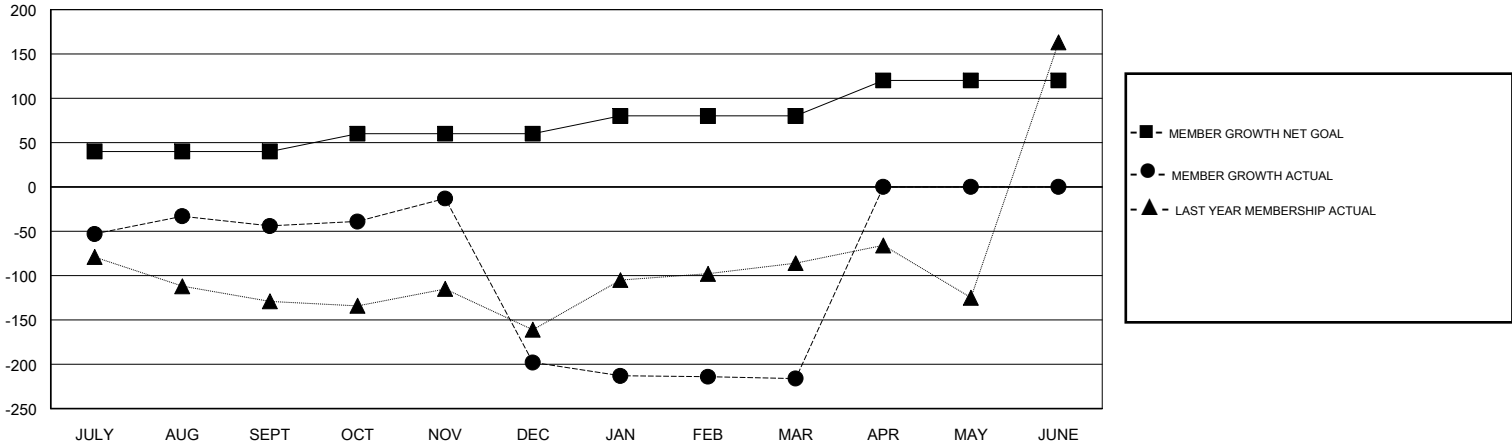
Clubs			
RESULTS FOR 2018-2019			
QUARTER	NEW CLUB GOAL	NEW CLUBS	DROPPED CLUBS
JULY/AUG/SEPT	2	1	0
OCT/NOV/DEC	1	0	5
JAN/FEB/MAR	1	0	1
APR/MAY/JUNE	2	0	0

Members			
RESULTS FOR 2018-2019			
QUARTER	MEMBER GROWTH NET GOAL	MEMBER GROWTH ACTUAL	DROPPED MEMBERS ACTUAL (including transfers)
JULY/AUG/SEPT	40	98	103
OCT/NOV/DEC	20	107	242
JAN/FEB/MAR	20	68	62
APR/MAY/JUNE	40	0	0

GOALS AND ACTUAL NEW CLUBS CUMULATIVE



GOALS AND ACTUAL MEMBERS CUMULATIVE



DROPPED CLUBS: 6	31 CLUBS OF 82 ADDED 1 OR MORE NEW MEMBERS	<u>GENDER DISTRIBUTION</u>	
DROPPED MEMBERS		MALE	2,233 (65.05%)
DECEASED	6	FEMALE	1,200 (34.95%)
CLUB CANCELLED	129	Women Percentage Fiscal Year Goal: 35%	
OTHER	270	TOTAL FAMILY UNIT MEMBERS	2,121
TOTAL	405	FAMILY MEMBERS PAYING HALF DUES	1,324

[CLICK HERE FOR CUMULATIVE MEMBERSHIP DATA](#)